

PARK LIFE



EAE Learning objectives for this lesson



At the end of the lesson you will know how to describe daily activities and talk about your weekend preferences. You will have learned new verbs and nouns and practiced dialogues and comprehension activities.



Activity One - questions.

1. What do you like to do at the weekend?
I like to.....
2. Do you like to go for walks?
3. Where do you go shopping?
4. What is your favourite coffee shop/restaurant?
5. Where do you like to walk?



Activity Two - Match the place with the activity

<u>Place</u>	<u>Activity</u>
..... Zoo Wait for the TGV
..... Coffee shop Feed the ducks
..... Park Visit the mayor
..... Shopping mall Look at beautiful paintings
..... Climbing centre Pay for a room
..... Town hall Go to see a doctor
..... Train station Wait at Place de L'Europe to go to the airport
..... Bus stop Go up and down a wall with rocks
..... Gym See animals
..... Art gallery Drink a hot/cold beverage
..... Hotel Buy some new clothes
..... Hospital Exercise and work out
.....

Activity Three

Mime one of the places from the last activity. Everyone has to guess where you are.

Activity Four

With a partner, name 5 things you could find in each of these places

Park

Bus Stop

Gym

Hotel

Hospital



Activity Five - Role plays - (At home look up words in the dictionary and prepare some ideas for a dialogue).

1. You are meeting your girlfriend in the shopping mall, but you want to go climbing.
2. You are at the park feeding the pigeons, a park warden tells you to stop
3. You are new in town, you want to find the hotel. You meet another person who is lost. They want to find the train station.
4. You had an accident when you were climbing. You ask someone where the hospital is

Activity Seven - Guess the place from the riddle

Places - Park, Zoo, Shopping Mall, Art Gallery, Coffee Shop, Hospital, Train Station

Monkeys and tigers,
Spiders and snakes,
Some are sleeping,
Some are awake

If you want to travel,
in all directions,
wait on the platform
for your connection

When you feel sick,
Go to this place
The doctors will try,
to solve the case

Take your date,
to appreciate the art,
find a way,
to melt her heart

A place to buy,
All types of things,
Furniture, Clothes
Food, G-strings

Sit on a bench,
and think about life,
feed the birds,
and think of your wife

Activity Eight - Song - Fill the gaps (*Listen actively for the missing information only*).

Blur - Park Life

Confidence is a preference for the habitual
voyeur of what is known as (parklife)
And morning _____ can be avoided if you
take a route straight through what is known as
(parklife)
John's got brewers droop he gets intimidated
by the dirty _____
They love a bit of it (parklife)
Who's that gut lord marching... you should cut
down on your porklife mate... get some

[Chorus]

All the people
So many people
They all go hand in hand
Hand in hand through their

Know what I mean
I get up when I want except on Wednesdays
when I get rudely awakened by the

(Parklife)
I put my _____ on, have a cup of
_____ and I think about leaving the house
(parklife)
I feed the pigeons I sometimes feed the
_____ too it gives me a sense of
enormous _____ (parklife)
And then I'm _____ for the rest of the
day safe in the knowledge there will always be
a bit of my heart devoted to it (parklife)

[Chorus]

Parklife (parklife)
Parklife (parklife)

It's got nothing to do with vorsprung durch
technic you know
And it's not about you _____ who go
round and round and round
Parklife (parklife)

QUESTIONS: 1. What is this song about?

2. Do you like this song? Why, why not?

Activity Nine - Describe a public place - everyone must guess the place.

Activity Ten - Picnic in the Park

Watch the video and answer the questions
<https://www.youtube.com/watch?v=jqtpuYvOfHY>

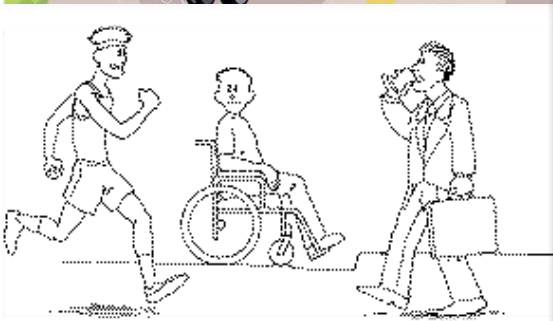
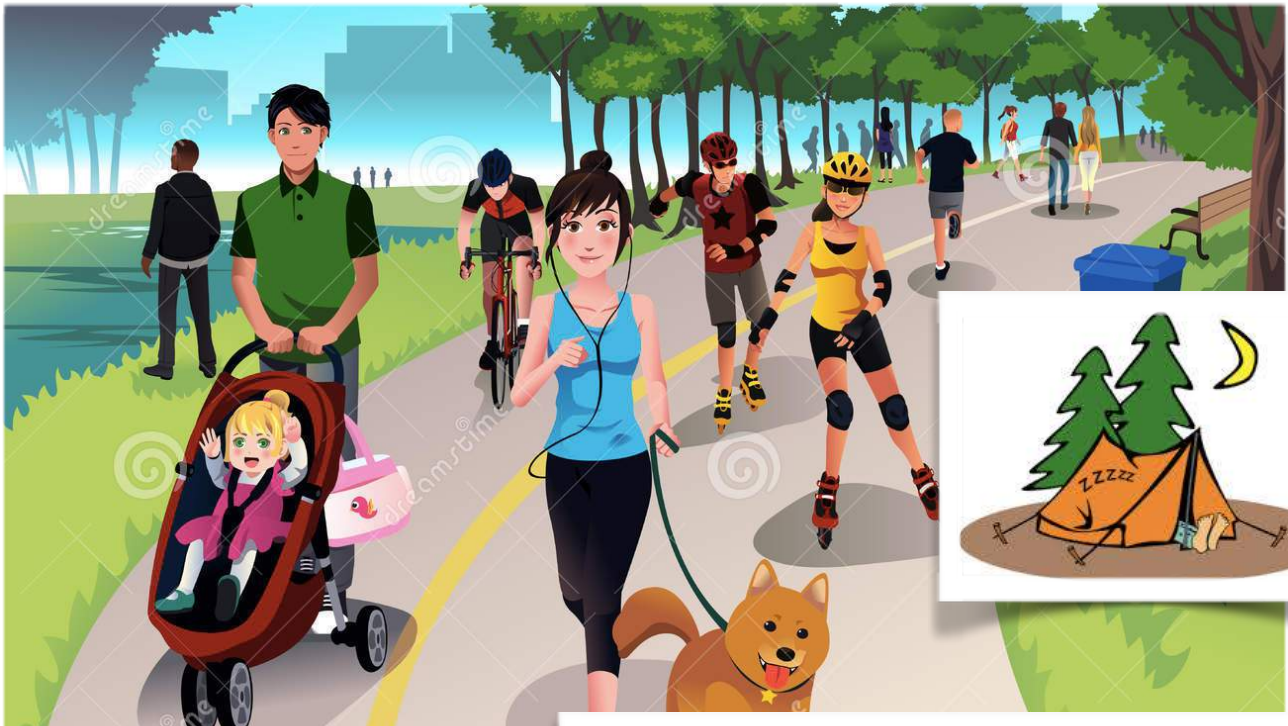
1. Where is Mr Bean?
2. What is he doing?
3. What are the ingredients of his sandwich?
4. What happens to his sandwich in the end?



Activity Eleven - Picnic food.

With your partner plan a picnic menu. Tell the others in the class what you would take to the park for a picnic lunch.

Activity Twelve - Describe what's happening in the images below.



learning objectives

How far have you got?

Fill in the bars to show your progress

easy access english